

Dear Members, Residents & Subscribers,

NEWSLETTER AUTUMN 2020

Committee News. Many of the clubs and groups which advertise their activity in *Waterlines* are now closed due to the lockdown but the SHRA committee continues to work on a number of issues. So, instead of an edition of *Waterlines* we have published this short newsletter to keep members up to date with the Committee's activities.

The committee welcomes Iain Shore as a new member.

We are regretting having to go back to Zoom meetings again. Over the summer, the committee had a couple of successful outdoor meetings and had retired to the Yacht Club for the winter meetings. We all look forward to meeting again face to face. If you would like to join us as a committee member do get in touch.

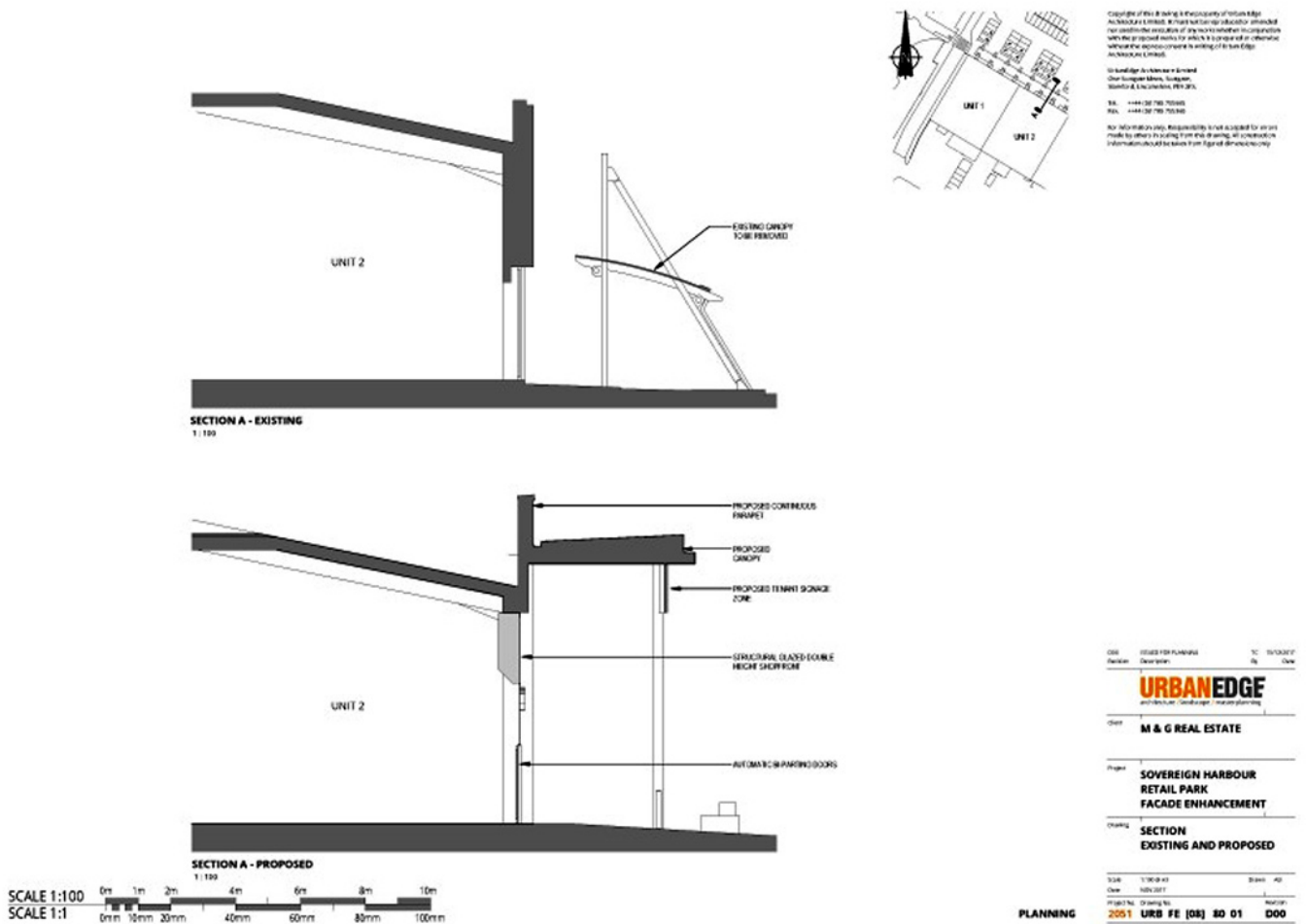


Harbour Seating - The story so far. We received requests from residents for more seating in the harbour and after receiving many supportive comments about the need for this following a Facebook post, we approached the local councillors who agreed that monies for two seats could be found from the devolved budget and SHRA agreed to fund two more seats from its own funds.

Seating is quite contentious as some residents feel that seating near their property would result in rowdy behaviour. So, members of the

committee walked around the harbour with local councillors to identify suitable places for seats which would be away from residences. The first site we chose was Hobart Quay where there is a road and wall separating the houses from the walkway. East Sussex County Council is responsible for the walkway and decided to consult the local residents nearest the proposed seating. They sent out 40 consultation letters and received 7 responses, six of whom were against the proposals – so the County decided it could not allow a seat. We are currently thinking about our next steps as there are people in our

community who cannot walk far and need a seat. Their needs are being ignored. If you have any suggestions about a way forward, do let us know.



Retail Park - As you are no doubt aware the Retail Park is undergoing a bit of a makeover and the roof of the covered walkway has been removed (see image above showing planned replacement - the plans were agreed two years ago and can be viewed on the EBC Planning website [by clicking here...](#)) The SHRA has written several times to M&G who own the site to alert them to rubbish and other situations that were dangerous to shoppers. We look forward to seeing the final results of the makeover.

Annual Rentcharge - In August, the SHRA wrote to Caroline Ansell MP to ask for help in persuading the CIC to produce more transparent information about the rentcharge. As the contract with Pevensey Coastal Defences Ltd for maintenance of the sea defences expires in 2025, we also suggested that we would like to be involved any decisions about new arrangements. In October, the Environment Agency, Area Director (Solent & South Downs), responded to Caroline that a new plan for the coastal defences from Beachy Head and along the whole of Pevensey Bay is being developed. Work on public engagement in this plan is due to begin in 2021. The Environment Agency also indicated that Sovereign Harbour Homeowners can expect to pay a contribution to sea defences in perpetuity. We will continue to press to be involved in discussion of any new arrangements and continue to insist on greater transparency in the current arrangements.

There has been some recent correspondence in the *Eastbourne Herald* which misrepresents the situation. The author complained that estate agents did not tell potential buyers about the rentcharge. The main responsibility for alerting buyers are the solicitors, but enquiries we made of several estate agents suggested that they were well aware of the annual rentcharge and would alert potential buyers. We will be writing to *The Herald* shortly to set the record straight. For further information on the rentcharge see the relevant pages on the SHRA website www.shra.co.uk/rentcharge.html

Adopted Roads - Several roads in South Harbour Key West, portions of Santa Cruz Drive and Bermuda Place remain un-adopted by East Sussex County Council (ESCC) years after the estate was built. They are now falling into a state of disrepair. We wrote to East Sussex Highways and they responded that these roads were still under the control of Persimmon Homes. The County had no control over when the adoption would take place, it was a decision for the landowner. ESCC had agreed plans with Persimmons including drawings with details of the bridges, ramps and retaining walls. The street lighting was now being inspected to identify any defects. These would have to be rectified before the roads were adopted by East Sussex County Council. The highway department agreed to keep the SHRA updated on progress.



Public Spaces Protection Orders (PSPO) - The renewal of the PSPO's that were introduced in November 2017 relating to dog fouling and/or dogs off lead have recently been the subject of a public consultation carried out by Eastbourne Borough Council (EBC). The object of the consultation was to ascertain views on whether the PSPO's should be continued in their present form, change them either in scope or geographically or abolish them.

The SHRA took part in the consultation process and in doing so drew attention to issues that had been raised by members regarding inadequate signage and lack of enforcement. We also pointed out that the inconsistency of having some adopted public places on the harbour subject to the orders and others not. The result of the consultation is now being considered by the Director of Services of EBC.

Join SHRA - Membership of the SHRA is open to all households in owned or rented residential property located within the Sovereign Harbour estate, and owners of such residential property. The subscription fee for life membership is a one-off payment of £10. Easily join on-line using your credit card. www.shra.co.uk/join.html

info@shra.co.uk

www.shra.co.uk